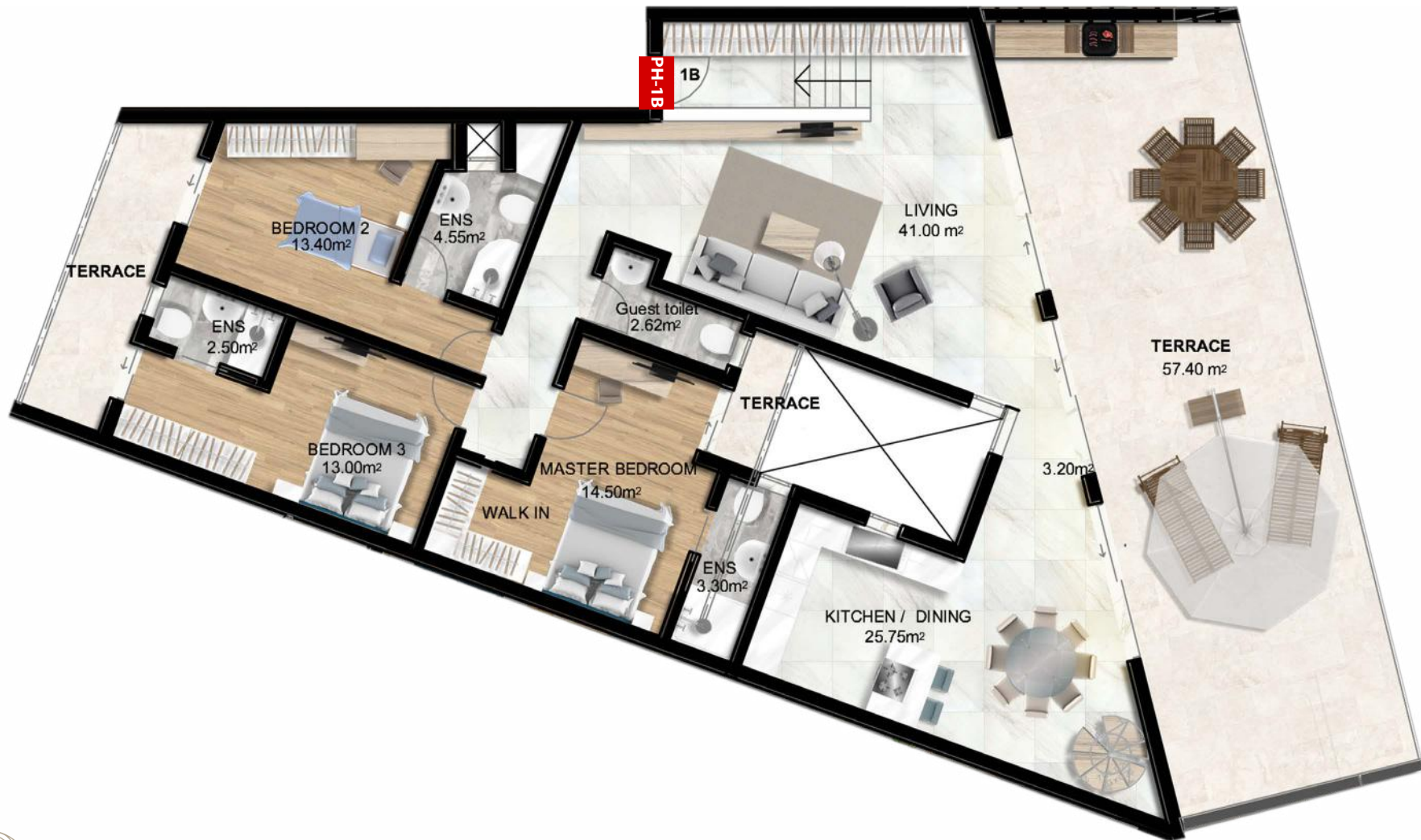


# PENTHOUSE



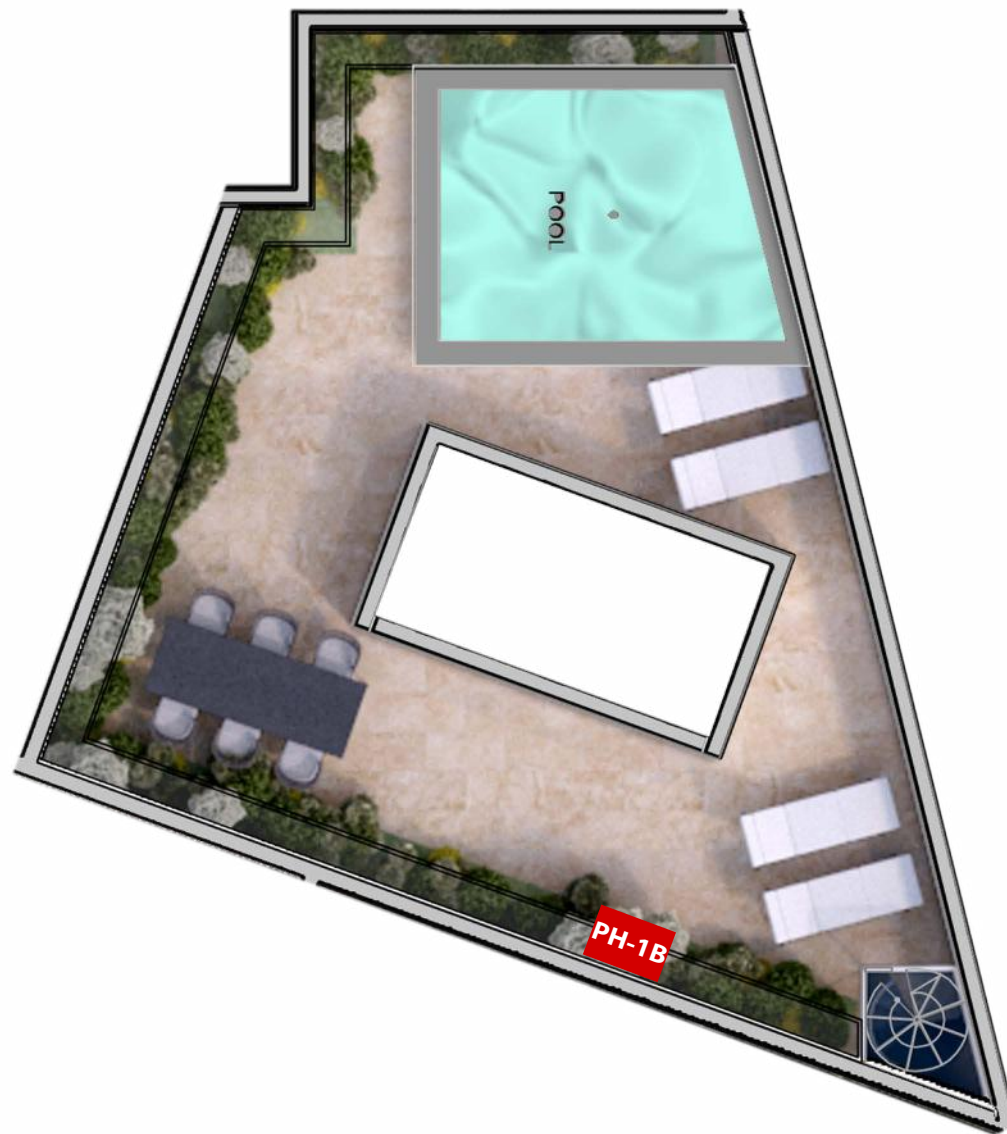
\*Not to scale



SKORBA  
MANSIONS

A RESIDENTIAL DEVELOPMENT BY  **FIJO**  
DEVELOPMENTS LIMITED

# ROOFTOP



\*Not to scale



SKORBA  
MANSIONS

A RESIDENTIAL DEVELOPMENT BY  **FIJO**  
DEVELOPMENTS LIMITED



**PENTHOUSE LEVEL PLAN**



**ROOFTOP LEVEL PLAN**



## PENTHOUSE LEVEL AREAS

BLOCK	APARTMENT REFERENCE	NUMBER OF BEDROOMS	INTERIOR	EXTERIOR	TOTAL
A	PH1A	2	104.72	27.77	132.49
A	PH2A	2	101.82	23.59	125.41
B	PH1B	3	140.35	68.98	209.33
B	PH2B	3	132.49	111.98	244.47
B	PH3B	2	98.72	39.56	138.28
B	PH4B	2	94.35	46.64	140.99
B	PH5B	2	114.14	70.86	185.00
C	PH1C	2	80.21	35.66	115.87
C	PH2C	3	112.64	49.64	162.28



## ROOFTOP AREAS

BLOCK	APARTMENT REFERENCE	EXTERIOR	TOTAL
A	PH1A	81.89	214.38
A	PH2A	81.71	207.12
B	PH1B	95.10	304.43
B	PH2B	143.07	387.54
B	PH3B	80.36	218.64
B	PH4B	77.27	218.26
B	PH5B	104.88	289.88
C	PH1C	64.28	180.15
C	PH2C	81.32	243.60

# ARIAL VIEW MAP

